

Flange Terminations

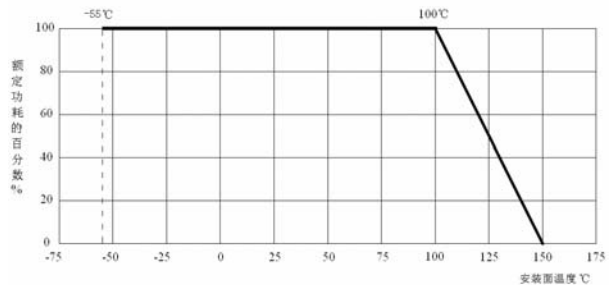
Main Specifications

- ◇ **Nominal Impedance:** 50 Ω
- ◇ **Resistive Tolerance:** ±5% standard; ±2%, ±1% available
- ◇ **Power Rating:** 5W-1000W
- ◇ **Frequency Range :** DC-18GHz
- ◇ **Operating Temperature:** -55°C to +150°C
- ◇ **Temperature Coefficient:** <150ppm/°C
- ◇ **RoHS Compliant**

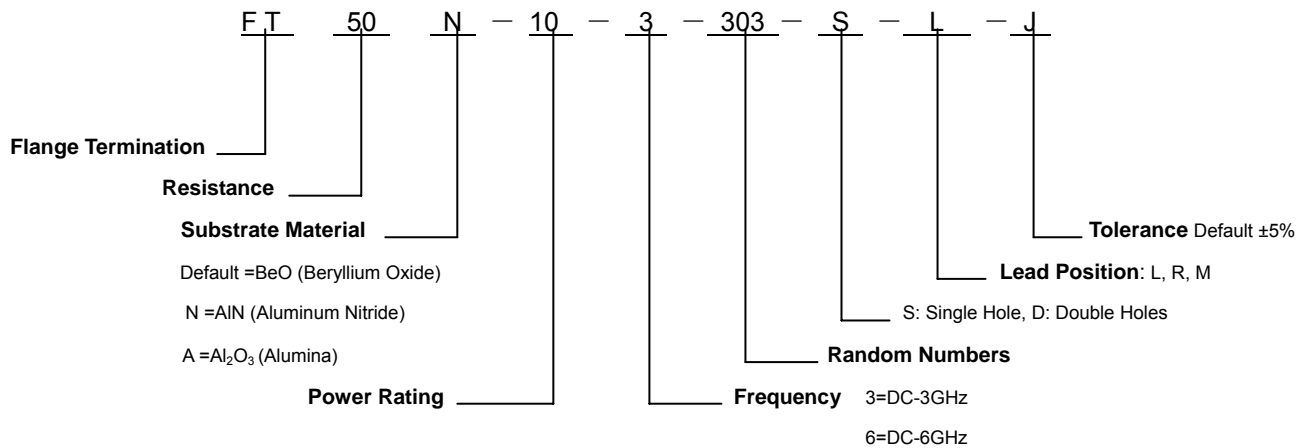
Material Specifications

- ◇ **Flange:** Copper
- ◇ **Tab:** Beryllium Copper or Silver
- ◇ **Cover:** Alumina
- ◇ **Solder:** SN96
- ◇ **Resistor:** Thin Film
- ◇ **Substrate:** BeO, AlN, Al₂O₃
- ◇ **Mechanical Tolerance:** ±2%
- ◇ **Packaging:** Plastic Box

Power Derating

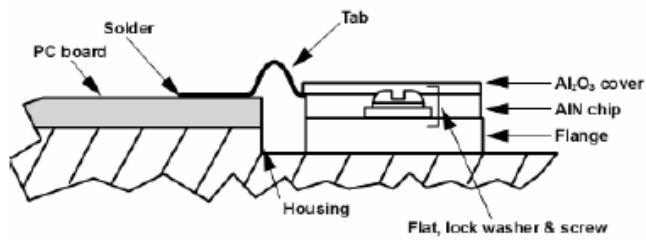


HOW TO ORDER



Resistance Tolerance			
Code	F	G	J
Tolerance	±1%	±2%	±5%

Recommendations of Installing Flange Terminations



* It's better that if can form a small loop in the tab to release strain when the heat is dissipated to ensure good contact with ground. The tab to minimize the fold to prevent tab break when installing.

** Please installed with the flange resistor, proposes to use socket head screws, flat & split washers.

*** To have good heat transfer, it is recommended that the heat sink that is mounted flange surface roughness less than 0.025mm.

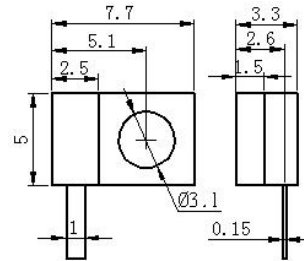
**** The products in contact with the heat sink surface with high-quality silicone grease which should be less than 0.025mm.

Part Number: FT50-XX-3-303-S-L-J

Electrical Specifications

- ◇ **Resistance:** 50 Ω
- ◇ **Resistive Tolerance:** ±5%
- ◇ **Power Rating:** 5W, 10W, 20W
- ◇ **Frequency:** DC-3GHz
- ◇ **VSWR (Max.):** 1.20:1
- ◇ **Operating Temperature:** -55°C to +150°C
- ◇ **Temperature Coefficient:** <150ppm/°C
- ◇ **Substrate:** BeO or AlN
- ◇ **Lead Length:** 4mm
- ◇ **RoHS Compliant**

Outline Drawing (mm)

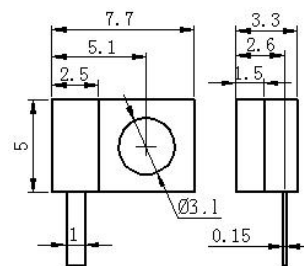


Part Number: FT50-XX-6-303-S-L-J

Electrical Specifications

- ◇ **Resistance:** 50 Ω
- ◇ **Resistive Tolerance:** ±5%
- ◇ **Power Rating:** 5W, 10W, 20W
- ◇ **Frequency:** DC-6GHz
- ◇ **VSWR (Max.):** 1.30:1
- ◇ **Operating Temperature:** -55°C to +150°C
- ◇ **Temperature Coefficient:** <150ppm/°C
- ◇ **Substrate:** BeO or AlN
- ◇ **Lead Length:** 4mm
- ◇ **RoHS Compliant**

Outline Drawing (mm)

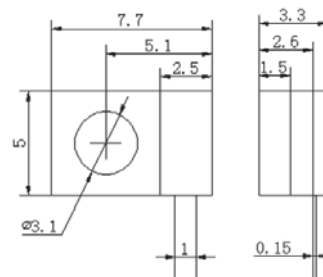


Part Number: FT50-XX-3-303-S-R-J

Electrical Specifications

- ◇ **Resistance:** 50 Ω
- ◇ **Resistive Tolerance:** ±5%
- ◇ **Power Rating:** 5W, 10W, 20W
- ◇ **Frequency:** DC-3GHz
- ◇ **VSWR (Max.):** 1.20:1
- ◇ **Operating Temperature:** -55°C to +150°C
- ◇ **Temperature Coefficient:** <150ppm/°C
- ◇ **Substrate:** BeO or AlN
- ◇ **Lead Length:** 4mm
- ◇ **RoHS Compliant**

Outline Drawing (mm)

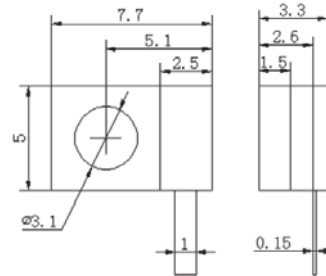


Part Number: FT50-XX-6-303-S-R-J

Electrical Specifications

- ◇ **Resistance:** 50 Ω
- ◇ **Resistive Tolerance:** ±5%
- ◇ **Power Rating:** 5W, 10W, 20W
- ◇ **Frequency:** DC-6GHz
- ◇ **VSWR (Max.):** 1.30:1
- ◇ **Operating Temperature:** -55°C to +150°C
- ◇ **Temperature Coefficient:** <150ppm/°C
- ◇ **Substrate:** BeO or AlN
- ◇ **Lead Length:** 4mm
- ◇ **RoHS Compliant**

Outline Drawing (mm)

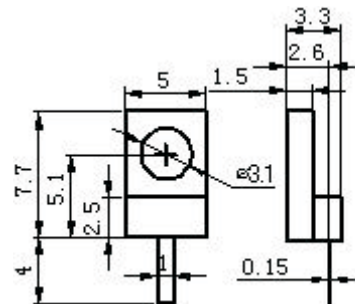


Part Number: FT50-XX-3-303-S-M-J

Electrical Specifications

- ◇ **Resistance:** 50 Ω
- ◇ **Resistive Tolerance:** ±5%
- ◇ **Power Rating:** 5W, 10W, 20W
- ◇ **Frequency:** DC-3GHz
- ◇ **VSWR (Max.):** 1.20:1
- ◇ **Operating Temperature:** -55°C to +150°C
- ◇ **Temperature Coefficient:** <150ppm/°C
- ◇ **Substrate:** BeO or AlN
- ◇ **Lead Length:** 4mm
- ◇ **RoHS Compliant**

Outline Drawing (mm)

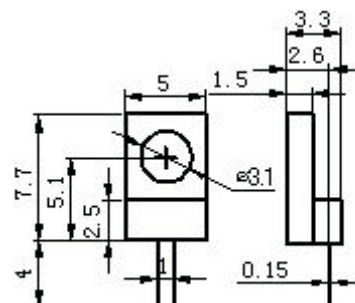


Part Number: FT50-XX-6-303-S-M-J

Electrical Specifications

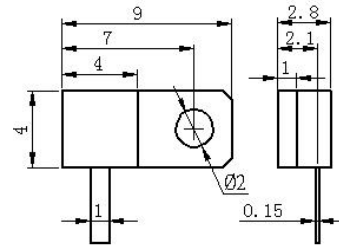
- ◇ **Resistance:** 50 Ω
- ◇ **Resistive Tolerance:** ±5%
- ◇ **Power Rating:** 5W, 10W, 20W
- ◇ **Frequency:** DC-6GHz
- ◇ **VSWR (Max.):** 1.30:1
- ◇ **Operating Temperature:** -55°C to +150°C
- ◇ **Temperature Coefficient:** <150ppm/°C
- ◇ **Substrate:** BeO or AlN
- ◇ **Lead Length:** 4mm
- ◇ **RoHS Compliant**

Outline Drawing (mm)

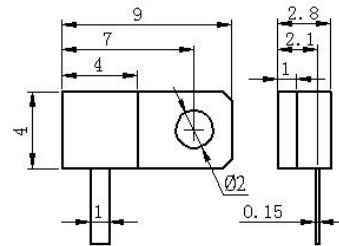


Part Number: FT50-XX-3-701-S-L-J**Electrical Specifications**

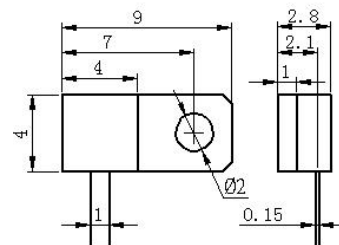
- ◇ **Resistance:** 50 Ω
- ◇ **Resistive Tolerance:** $\pm 5\%$
- ◇ **Power Rating:** 5W, 10W, 20W
- ◇ **Frequency:** DC-3GHz
- ◇ **VSWR (Max.):** 1.20:1
- ◇ **Operating Temperature:** -55°C to $+150^{\circ}\text{C}$
- ◇ **Temperature Coefficient:** $<150\text{ppm}/^{\circ}\text{C}$
- ◇ **Substrate:** BeO or AlN
- ◇ **Lead Length:** 4mm
- ◇ **RoHS Compliant**

Outline Drawing (mm)**Part Number: FT50-XX-4-701-S-L-J****Electrical Specifications**

- ◇ **Resistance:** 50 Ω
- ◇ **Resistive Tolerance:** $\pm 5\%$
- ◇ **Power Rating:** 5W, 10W, 20W
- ◇ **Frequency:** DC-4GHz
- ◇ **VSWR (Max.):** 1.25:1
- ◇ **Operating Temperature:** -55°C to $+150^{\circ}\text{C}$
- ◇ **Temperature Coefficient:** $<150\text{ppm}/^{\circ}\text{C}$
- ◇ **Substrate:** BeO or AlN
- ◇ **Lead Length:** 4mm
- ◇ **RoHS Compliant**

Outline Drawing (mm)**Part Number: FT50-XX-6-701-S-L-J****Electrical Specifications**

- ◇ **Resistance:** 50 Ω
- ◇ **Resistive Tolerance:** $\pm 5\%$
- ◇ **Power Rating:** 5W, 10W, 20W
- ◇ **Frequency:** DC-6GHz
- ◇ **VSWR (Max.):** 1.30:1
- ◇ **Operating Temperature:** -55°C to $+150^{\circ}\text{C}$
- ◇ **Temperature Coefficient:** $<150\text{ppm}/^{\circ}\text{C}$
- ◇ **Substrate:** BeO or AlN
- ◇ **Lead Length:** 4mm
- ◇ **RoHS Compliant**

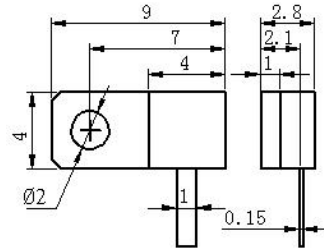
Outline Drawing (mm)

Part Number: FT50-XX-3-701-S-R-J

Electrical Specifications

- ◇ **Resistance:** 50 Ω
- ◇ **Resistive Tolerance:** ±5%
- ◇ **Power Rating:** 5W, 10W, 20W
- ◇ **Frequency:** DC-3GHz
- ◇ **VSWR (Max.):** 1.20:1
- ◇ **Operating Temperature:** -55°C to +150°C
- ◇ **Temperature Coefficient:** <150ppm/°C
- ◇ **Substrate:** BeO or AlN
- ◇ **Lead Length:** 4mm
- ◇ **RoHS Compliant**

Outline Drawing (mm)

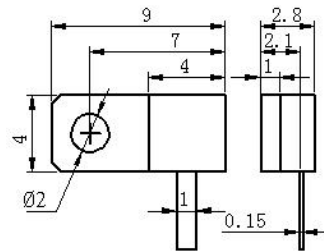


Part Number: FT50-XX-4-701-S-R-J

Electrical Specifications

- ◇ **Resistance:** 50 Ω
- ◇ **Resistive Tolerance:** ±5%
- ◇ **Power Rating:** 5W, 10W, 20W
- ◇ **Frequency:** DC-4GHz
- ◇ **VSWR (Max.):** 1.25:1
- ◇ **Operating Temperature:** -55°C to +150°C
- ◇ **Temperature Coefficient:** <150ppm/°C
- ◇ **Substrate:** BeO or AlN
- ◇ **Lead Length:** 4mm
- ◇ **RoHS Compliant**

Outline Drawing (mm)

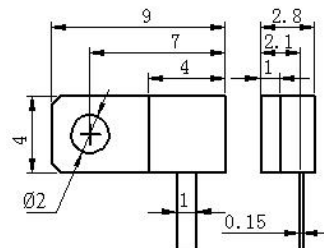


Part Number: FT50-XX-6-701-S-R-J

Electrical Specifications

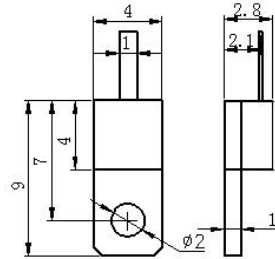
- ◇ **Resistance:** 50 Ω
- ◇ **Resistive Tolerance:** ±5%
- ◇ **Power Rating:** 5W, 10W, 20W
- ◇ **Frequency:** DC-6GHz
- ◇ **VSWR (Max.):** 1.30:1
- ◇ **Operating Temperature:** -55°C to +150°C
- ◇ **Temperature Coefficient:** <150ppm/°C
- ◇ **Substrate:** BeO or AlN
- ◇ **Lead Length:** 4mm
- ◇ **RoHS Compliant**

Outline Drawing (mm)

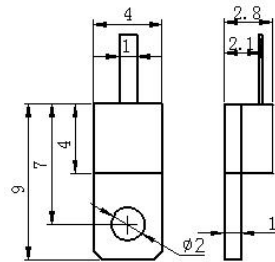


Part Number: FT50-XX-3-701-S-M-J**Electrical Specifications**

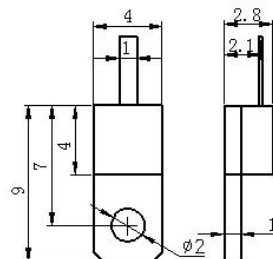
- ◇ **Resistance:** 50 Ω
- ◇ **Resistive Tolerance:** $\pm 5\%$
- ◇ **Power Rating:** 5W, 10W, 20W
- ◇ **Frequency:** DC-3GHz
- ◇ **VSWR (Max.):** 1.20:1
- ◇ **Operating Temperature:** -55°C to $+150^{\circ}\text{C}$
- ◇ **Temperature Coefficient:** $<150\text{ppm}/^{\circ}\text{C}$
- ◇ **Substrate:** BeO or AlN
- ◇ **Lead Length:** 4mm
- ◇ **RoHS Compliant**

Outline Drawing (mm)**Part Number: FT50-XX-4-701-S-M-J****Electrical Specifications**

- ◇ **Resistance:** 50 Ω
- ◇ **Resistive Tolerance:** $\pm 5\%$
- ◇ **Power Rating:** 5W, 10W, 20W
- ◇ **Frequency:** DC-4GHz
- ◇ **VSWR (Max.):** 1.25:1
- ◇ **Operating Temperature:** -55°C to $+150^{\circ}\text{C}$
- ◇ **Temperature Coefficient:** $<150\text{ppm}/^{\circ}\text{C}$
- ◇ **Substrate:** BeO or AlN
- ◇ **Lead Length:** 4mm
- ◇ **RoHS Compliant**

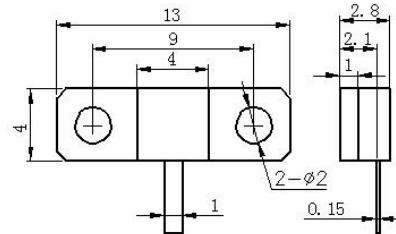
Outline Drawing (mm)**Part Number: FT50-XX-6-701-S-M-J****Electrical Specifications**

- ◇ **Resistance:** 50 Ω
- ◇ **Resistive Tolerance:** $\pm 5\%$
- ◇ **Power Rating:** 5W, 10W, 20W
- ◇ **Frequency:** DC-6GHz
- ◇ **VSWR (Max.):** 1.30:1
- ◇ **Operating Temperature:** -55°C to $+150^{\circ}\text{C}$
- ◇ **Temperature Coefficient:** $<150\text{ppm}/^{\circ}\text{C}$
- ◇ **Substrate:** BeO or AlN
- ◇ **Lead Length:** 4mm
- ◇ **RoHS Compliant**

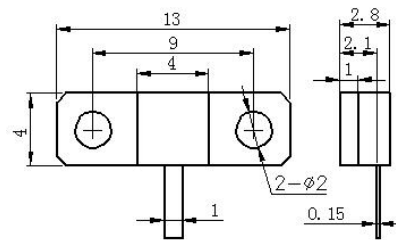
Outline Drawing (mm)

Part Number: FT50-XX-3-701-D-M-J**Electrical Specifications**

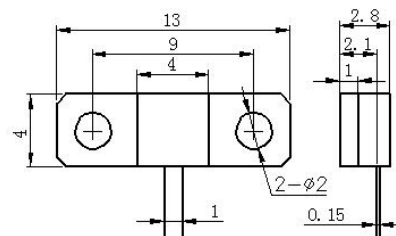
- ◇ **Resistance:** 50 Ω
- ◇ **Resistive Tolerance:** $\pm 5\%$
- ◇ **Power Rating:** 5W, 10W, 20W
- ◇ **Frequency:** DC-3GHz
- ◇ **VSWR (Max.):** 1.20:1
- ◇ **Operating Temperature:** -55°C to +150°C
- ◇ **Temperature Coefficient:** <150ppm/°C
- ◇ **Substrate:** BeO or AlN
- ◇ **Lead Length:** 4mm
- ◇ **RoHS Compliant**

Outline Drawing (mm)**Part Number: FT50-XX-4-701-D-M-J****Electrical Specifications**

- ◇ **Resistance:** 50 Ω
- ◇ **Resistive Tolerance:** $\pm 5\%$
- ◇ **Power Rating:** 5W, 10W, 20W
- ◇ **Frequency:** DC-4GHz
- ◇ **VSWR (Max.):** 1.25:1
- ◇ **Operating Temperature:** -55°C to +150°C
- ◇ **Temperature Coefficient:** <150ppm/°C
- ◇ **Substrate:** BeO, AlN
- ◇ **Lead Length:** 4mm
- ◇ **RoHS Compliant**

Outline Drawing (mm)**Part Number: FT50-XX-6-701-D-M-J****Electrical Specifications**

- ◇ **Resistance:** 50 Ω
- ◇ **Resistive Tolerance:** $\pm 5\%$
- ◇ **Power Rating:** 5W, 10W, 20W
- ◇ **Frequency:** DC-6GHz
- ◇ **VSWR (Max.):** 1.30:1
- ◇ **Operating Temperature:** -55°C to +150°C
- ◇ **Temperature Coefficient:** <150ppm/°C
- ◇ **Substrate:** BeO or AlN
- ◇ **Lead Length:** 4mm
- ◇ **RoHS Compliant**

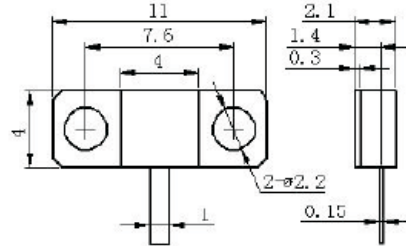
Outline Drawing (mm)

Part Number: FT50-XX-3-704-D-M-J

Electrical Specifications

- ◇ **Resistance:** 50 Ω
- ◇ **Resistive Tolerance:** ±5%
- ◇ **Power Rating:** 5W, 10W, 20W
- ◇ **Frequency:** DC-3GHz
- ◇ **VSWR (Max.):** 1.20:1
- ◇ **Operating Temperature:** -55°C to +150°C
- ◇ **Temperature Coefficient:** <150ppm/°C
- ◇ **Substrate:** BeO or AlN
- ◇ **Lead Length:** 4mm
- ◇ **RoHS Compliant**

Outline Drawing (mm)

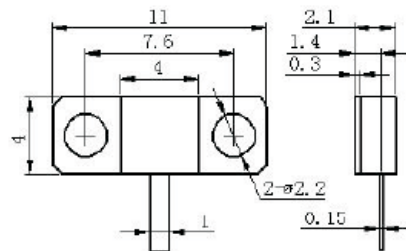


Part Number: FT50-XX-4-704-D-M-J

Electrical Specifications

- ◇ **Resistance:** 50 Ω
- ◇ **Resistive Tolerance:** ±5%
- ◇ **Power Rating:** 5W, 10W, 20W
- ◇ **Frequency:** DC-4GHz
- ◇ **VSWR (Max.):** 1.25:1
- ◇ **Operating Temperature:** -55°C to +150°C
- ◇ **Temperature Coefficient:** <150ppm/°C
- ◇ **Substrate:** BeO or AlN
- ◇ **Lead Length:** 4mm
- ◇ **RoHS Compliant**

Outline Drawing (mm)

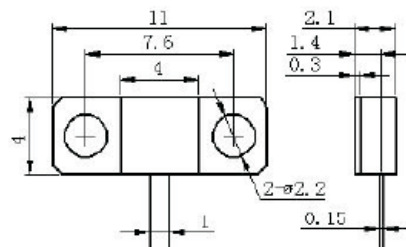


Part Number: FT50-XX-6-704-D-M-J

Electrical Specifications

- ◇ **Resistance:** 50 Ω
- ◇ **Resistive Tolerance:** ±5%
- ◇ **Power Rating:** 5W, 10W, 20W
- ◇ **Frequency:** DC-6GHz
- ◇ **VSWR (Max.):** 1.30:1
- ◇ **Operating Temperature:** -55°C to +150°C
- ◇ **Temperature Coefficient:** <150ppm/°C
- ◇ **Substrate:** BeO or AlN
- ◇ **Lead Length:** 4mm
- ◇ **RoHS Compliant**

Outline Drawing (mm)

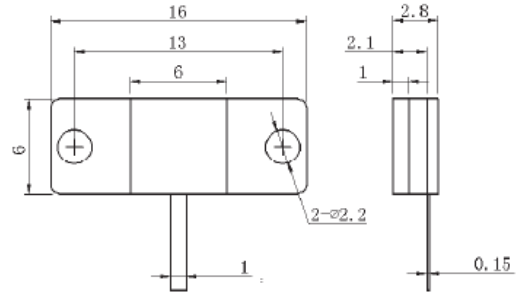


Part Number: FT50-XX-3-106-D-M-J

Electrical Specifications

- ✧ **Resistance:** 50 Ω
- ✧ **Resistive Tolerance:** ±5%
- ✧ **Power Rating:** 30W, 60W
- ✧ **Frequency:** DC-3GHz
- ✧ **VSWR (Max.):** 1.20:1
- ✧ **Operating Temperature:** -55°C to +150°C
- ✧ **Temperature Coefficient:** <150ppm/°C
- ✧ **Substrate:** BeO or AlN
- ✧ **Lead Length:** 6mm
- ✧ **RoHS Compliant**

Outline Drawing (mm)

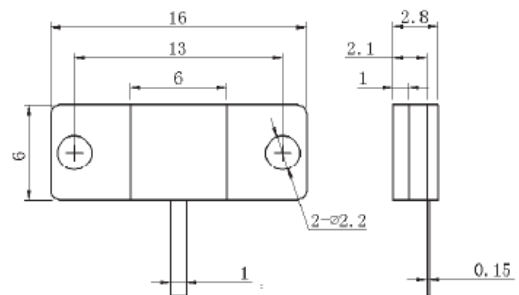


Part Number: FT50-XX-5-106-D-M-J

Electrical Specifications

- ✧ **Resistance:** 50 Ω
- ✧ **Resistive Tolerance:** ±5%
- ✧ **Power Rating:** 30W, 60W
- ✧ **Frequency:** DC-5GHz
- ✧ **VSWR (Max.):** 1.25:1
- ✧ **Operating Temperature:** -55°C to +150°C
- ✧ **Temperature Coefficient:** <150ppm/°C
- ✧ **Substrate:** BeO or AlN
- ✧ **Lead Length:** 6mm
- ✧ **RoHS Compliant**

Outline Drawing (mm)

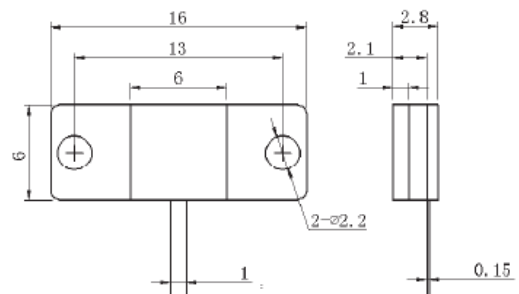


Part Number: FT50-XX-6-106-D-M-J

Electrical Specifications

- ✧ **Resistance:** 50 Ω
- ✧ **Resistive Tolerance:** ±5%
- ✧ **Power Rating:** 30W, 60W
- ✧ **Frequency:** DC-6GHz
- ✧ **VSWR (Max.):** 1.30:1
- ✧ **Operating Temperature:** -55°C to +150°C
- ✧ **Temperature Coefficient:** <150ppm/°C
- ✧ **Substrate:** BeO or AlN
- ✧ **Lead Length:** 6mm
- ✧ **RoHS Compliant**

Outline Drawing (mm)

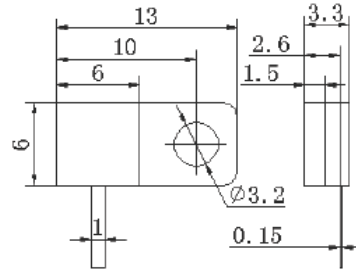


Part Number: FT50-XX-3-116-S-L-J

Electrical Specifications

- ◇ **Resistance:** 50 Ω
- ◇ **Resistive Tolerance:** ±5%
- ◇ **Power Rating:** 30W, 60W
- ◇ **Frequency:** DC-3GHz
- ◇ **VSWR (Max.):** 1.20:1
- ◇ **Operating Temperature:** -55°C to +150°C
- ◇ **Temperature Coefficient:** <150ppm/°C
- ◇ **Substrate:** BeO or AlN
- ◇ **Lead Length:** 6mm
- ◇ **RoHS Compliant**

Outline Drawing (mm)

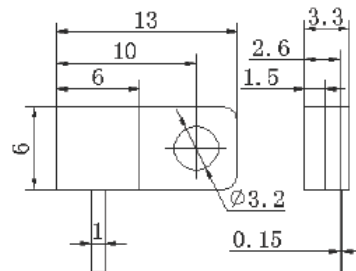


Part Number: FT50-XX-5-116-S-L-J

Electrical Specifications

- ◇ **Resistance:** 50 Ω
- ◇ **Resistive Tolerance:** ±5%
- ◇ **Power Rating:** 30W, 60W
- ◇ **Frequency:** DC-5GHz
- ◇ **VSWR (Max.):** 1.25:1
- ◇ **Operating Temperature:** -55°C to +150°C
- ◇ **Temperature Coefficient:** <150ppm/°C
- ◇ **Substrate:** BeO or AlN
- ◇ **Lead Length:** 6mm
- ◇ **RoHS Compliant**

Outline Drawing (mm)

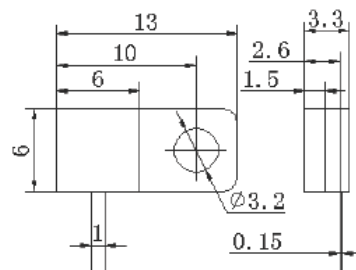


Part Number: FT50-XX-6-116-S-L-J

Electrical Specifications

- ◇ **Resistance:** 50 Ω
- ◇ **Resistive Tolerance:** ±5%
- ◇ **Power Rating:** 30W, 60W
- ◇ **Frequency:** DC-6GHz
- ◇ **VSWR (Max.):** 1.30:1
- ◇ **Operating Temperature:** -55°C to +150°C
- ◇ **Temperature Coefficient:** <150ppm/°C
- ◇ **Substrate:** BeO or AlN
- ◇ **Lead Length:** 6mm
- ◇ **RoHS Compliant**

Outline Drawing (mm)

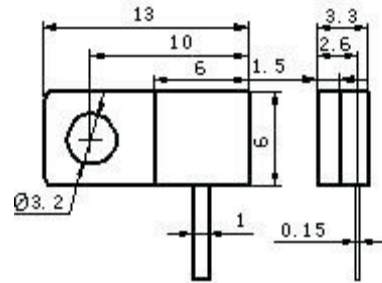


Part Number: FT50-XX-3-116-S-R-J

Electrical Specifications

- ✧ **Resistance:** 50 Ω
- ✧ **Resistive Tolerance:** ±5%
- ✧ **Power Rating:** 30W, 60W
- ✧ **Frequency:** DC-3GHz
- ✧ **VSWR (Max.):** 1.20:1
- ✧ **Operating Temperature:** -55°C to +150°C
- ✧ **Temperature Coefficient:** <150ppm/°C
- ✧ **Substrate:** BeO or AlN
- ✧ **Lead Length:** 6mm
- ✧ **RoHS Compliant**

Outline Drawing (mm)

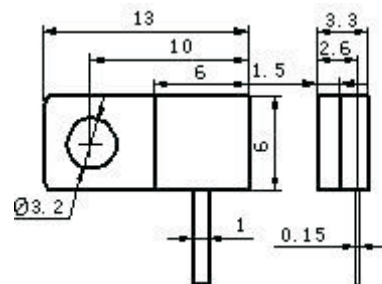


Part Number: FT50-XX-5-116-S-R-J

Electrical Specifications

- ✧ **Resistance:** 50 Ω
- ✧ **Resistive Tolerance:** ±5%
- ✧ **Power Rating:** 30W, 60W
- ✧ **Frequency:** DC-5GHz
- ✧ **VSWR (Max.):** 1.25:1
- ✧ **Operating Temperature:** -55°C to +150°C
- ✧ **Temperature Coefficient:** <150ppm/°C
- ✧ **Substrate:** BeO or AlN
- ✧ **Lead Length:** 6mm
- ✧ **RoHS Compliant**

Outline Drawing (mm)

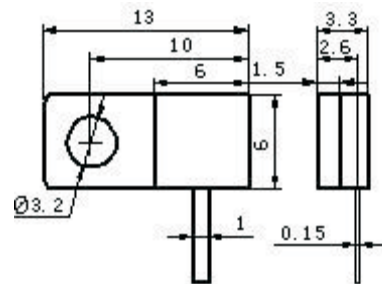


Part Number: FT50-XX-6-116-S-R-J

Electrical Specifications

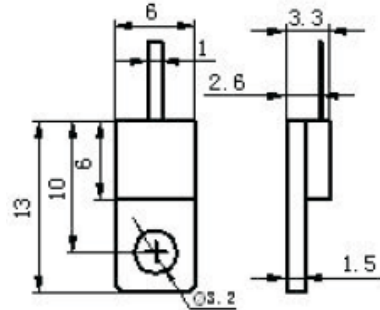
- ✧ **Resistance:** 50 Ω
- ✧ **Resistive Tolerance:** ±5%
- ✧ **Power Rating:** 30W, 60W
- ✧ **Frequency:** DC-6GHz
- ✧ **VSWR (Max.):** 1.30:1
- ✧ **Operating Temperature:** -55°C to +150°C
- ✧ **Temperature Coefficient:** <150ppm/°C
- ✧ **Substrate:** BeO or AlN
- ✧ **Lead Length:** 6mm
- ✧ **RoHS Compliant**

Outline Drawing (mm)

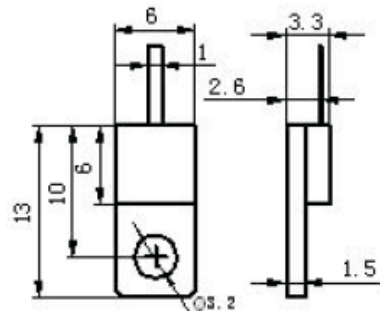


Part Number: FT50-XX-3-116-S-M-J**Electrical Specifications**

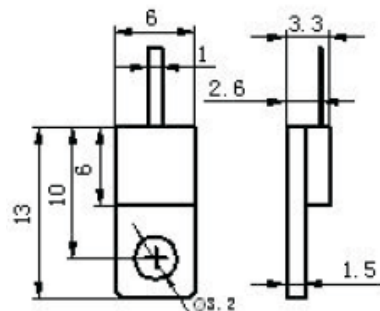
- ◇ **Resistance:** 50 Ω
- ◇ **Resistive Tolerance:** $\pm 5\%$
- ◇ **Power Rating:** 30W, 60W
- ◇ **Frequency:** DC-3GHz
- ◇ **VSWR (Max.):** 1.20:1
- ◇ **Operating Temperature:** -55°C to $+150^{\circ}\text{C}$
- ◇ **Temperature Coefficient:** $<150\text{ppm}/^{\circ}\text{C}$
- ◇ **Substrate:** BeO or AlN
- ◇ **Lead Length:** 6mm
- ◇ **RoHS Compliant**

Outline Drawing (mm)**Part Number: FT50-XX-5-116-S-M-J****Electrical Specifications**

- ◇ **Resistance:** 50 Ω
- ◇ **Resistive Tolerance:** $\pm 5\%$
- ◇ **Power Rating:** 30W, 60W
- ◇ **Frequency:** DC-5GHz
- ◇ **VSWR (Max.):** 1.25:1
- ◇ **Operating Temperature:** -55°C to $+150^{\circ}\text{C}$
- ◇ **Temperature Coefficient:** $<150\text{ppm}/^{\circ}\text{C}$
- ◇ **Substrate:** BeO or AlN
- ◇ **Lead Length:** 6mm
- ◇ **RoHS Compliant**

Outline Drawing (mm)**Part Number: FT50-XX-6-116-S-M-J****Electrical Specifications**

- ◇ **Resistance:** 50 Ω
- ◇ **Resistive Tolerance:** $\pm 5\%$
- ◇ **Power Rating:** 30W, 60W
- ◇ **Frequency:** DC-6GHz
- ◇ **VSWR (Max.):** 1.30:1
- ◇ **Operating Temperature:** -55°C to $+150^{\circ}\text{C}$
- ◇ **Temperature Coefficient:** $<150\text{ppm}/^{\circ}\text{C}$
- ◇ **Substrate:** BeO or AlN
- ◇ **Lead Length:** 6mm
- ◇ **RoHS Compliant**

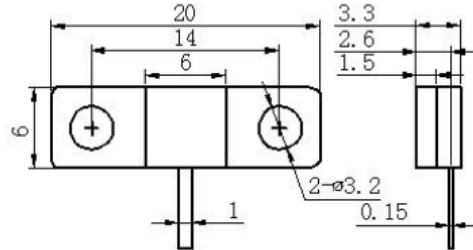
Outline Drawing (mm)

Part Number: FT50-XX-3-116-D-M-J

Electrical Specifications

- ◇ **Resistance:** 50 Ω
- ◇ **Resistive Tolerance:** ±5%
- ◇ **Power Rating:** 30W, 60W
- ◇ **Frequency:** DC-3GHz
- ◇ **VSWR (Max.):** 1.20:1
- ◇ **Operating Temperature:** -55°C to +150°C
- ◇ **Temperature Coefficient:** <150ppm/°C
- ◇ **Substrate:** BeO or AlN
- ◇ **Lead Length:** 6mm
- ◇ **RoHS Compliant**

Outline Drawing (mm)

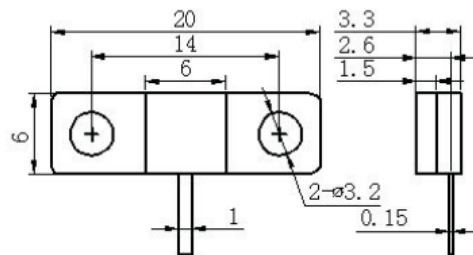


Part Number: FT50-XX-5-116-D-M-J

Electrical Specifications

- ◇ **Resistance:** 50 Ω
- ◇ **Resistive Tolerance:** ±5%
- ◇ **Power Rating:** 30W, 60W
- ◇ **Frequency:** DC-5GHz
- ◇ **VSWR (Max.):** 1.25:1
- ◇ **Operating Temperature:** -55°C to +150°C
- ◇ **Temperature Coefficient:** <150ppm/°C
- ◇ **Substrate:** BeO or AlN
- ◇ **Lead Length:** 6mm
- ◇ **RoHS Compliant**

Outline Drawing (mm)

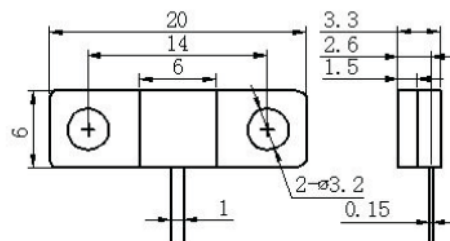


Part Number: FT50-XX-6-116-D-M-J

Electrical Specifications

- ◇ **Resistance:** 50 Ω
- ◇ **Resistive Tolerance:** ±5%
- ◇ **Power Rating:** 30W, 60W
- ◇ **Frequency:** DC-6GHz
- ◇ **VSWR (Max.):** 1.30:1
- ◇ **Operating Temperature:** -55°C to +150°C
- ◇ **Temperature Coefficient:** <150ppm/°C
- ◇ **Substrate:** BeO or AlN
- ◇ **Lead Length:** 6mm
- ◇ **RoHS Compliant**

Outline Drawing (mm)

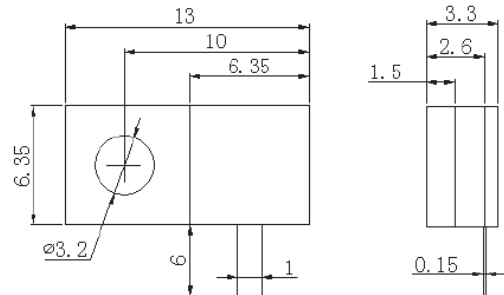


Part Number: FT50-60-3-303-S-R-J

Electrical Specifications

- ✧ **Resistance:** 50 Ω
- ✧ **Resistive Tolerance:** ±5%
- ✧ **Power Rating:** 60W
- ✧ **Frequency:** DC-3GHz
- ✧ **VSWR (Max.):** 1.20:1
- ✧ **Operating Temperature:** -55°C to +150°C
- ✧ **Temperature Coefficient:** <150ppm/°C
- ✧ **Substrate:** BeO or AlN
- ✧ **Lead Length:** 6mm
- ✧ **RoHS Compliant**

Outline Drawing (mm)

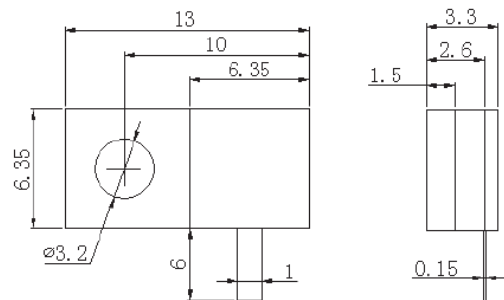


Part Number: FT50-60-6-303-S-R-J

Electrical Specifications

- ✧ **Resistance:** 50 Ω
- ✧ **Resistive Tolerance:** ±5%
- ✧ **Power Rating:** 60W
- ✧ **Frequency:** DC-6GHz
- ✧ **VSWR (Max.):** 1.30:1
- ✧ **Operating Temperature:** -55°C to +150°C
- ✧ **Temperature Coefficient:** <150ppm/°C
- ✧ **Substrate:** BeO or AlN
- ✧ **Lead Length:** 6mm
- ✧ **RoHS Compliant**

Outline Drawing (mm)

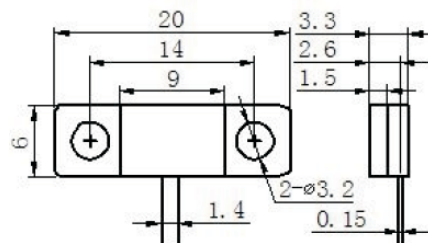


Part Number: FT50-100-3-203-D-M-J

Electrical Specifications

- ✧ **Resistance:** 50 Ω
- ✧ **Resistive Tolerance:** ±5%
- ✧ **Power Rating:** 100W
- ✧ **Frequency:** DC-3GHz
- ✧ **VSWR (Max.):** 1.20:1
- ✧ **Operating Temperature:** -55°C to +150°C
- ✧ **Temperature Coefficient:** <150ppm/°C
- ✧ **Substrate:** BeO or AlN
- ✧ **Lead Length:** 6mm
- ✧ **RoHS Compliant**

Outline Drawing (mm)

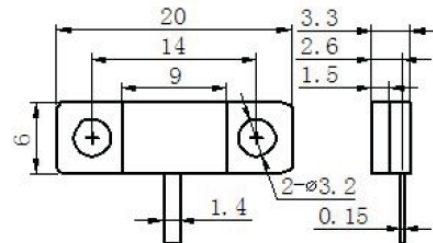


Part Number: FT50-100-6-203-D-M-J

Electrical Specifications

- ◇ **Resistance:** 50 Ω
- ◇ **Resistive Tolerance:** ±5%
- ◇ **Power Rating:** 100W
- ◇ **Frequency:** DC-6GHz
- ◇ **VSWR (Max.):** 1.30:1
- ◇ **Operating Temperature:** -55°C to +150°C
- ◇ **Temperature Coefficient:** <150ppm/°C
- ◇ **Substrate:** BeO or AlN
- ◇ **Lead Length:** 6mm
- ◇ **RoHS Compliant**

Outline Drawing (mm)

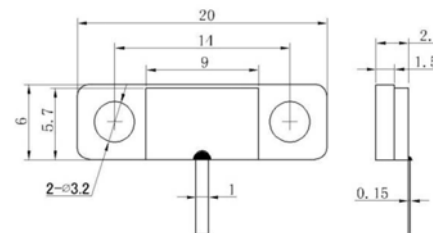


Part Number: FT50N-100-3-503B-D-M-J

Electrical Specifications

- ◇ **Resistance:** 50 Ω
- ◇ **Resistive Tolerance:** ±5%
- ◇ **Power Rating:** 100W
- ◇ **Frequency:** DC-3GHz
- ◇ **VSWR (Max.):** 1.20:1
- ◇ **Operating Temperature:** -55°C to +150°C
- ◇ **Temperature Coefficient:** <150ppm/°C
- ◇ **Substrate:** AlN
- ◇ **Lead Length:** 6mm
- ◇ **RoHS Compliant**

Outline Drawing (mm)

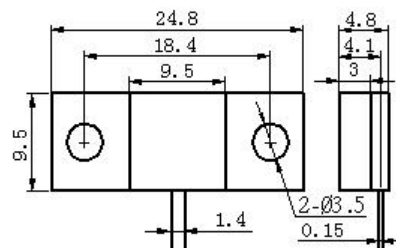


Part Number: FT50-XX-3-504-D-M-J

Electrical Specifications

- ◇ **Resistance:** 50 Ω
- ◇ **Resistive Tolerance:** ±5%
- ◇ **Power Rating:** 100W, 150W
- ◇ **Frequency:** DC-3GHz
- ◇ **VSWR (Max.):** 1.20:1
- ◇ **Operating Temperature:** -55°C to +150°C
- ◇ **Temperature Coefficient:** <150ppm/°C
- ◇ **Substrate:** BeO
- ◇ **Lead Length:** 6mm
- ◇ **RoHS Compliant**

Outline Drawing (mm)

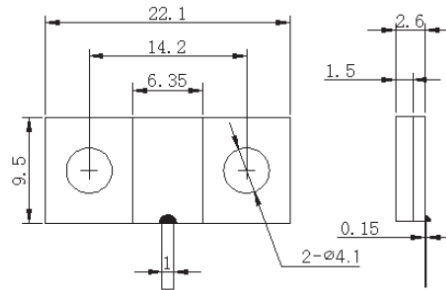


Part Number: FT50N-150-3-306B-D-M-J

Electrical Specifications

- ◇ **Resistance:** 50 Ω
- ◇ **Resistive Tolerance:** ±5%
- ◇ **Power Rating:** 150W
- ◇ **Frequency:** DC-3GHz
- ◇ **VSWR (Max.):** 1.20:1
- ◇ **Operating Temperature:** -55°C to +150°C
- ◇ **Temperature Coefficient:** <150ppm/°C
- ◇ **Substrate:** AlN or BeO
- ◇ **Lead Length:** 6mm
- ◇ **RoHS Compliant**

Outline Drawing (mm)

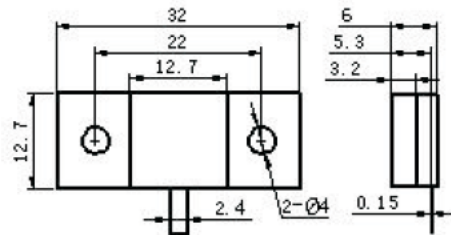


Part Number: FT50-200-9-709-D-M-J

Electrical Specifications

- ◇ **Resistance:** 50 Ω
- ◇ **Resistive Tolerance:** ±5%
- ◇ **Power Rating:** 200W
- ◇ **Frequency:** DC-9GHz
- ◇ **VSWR (Max.):** 1.40:1
- ◇ **Operating Temperature:** -55°C to +150°C
- ◇ **Temperature Coefficient:** <150ppm/°C
- ◇ **Substrate:** BeO
- ◇ **Lead Length:** 8mm
- ◇ **RoHS Compliant**

Outline Drawing (mm)

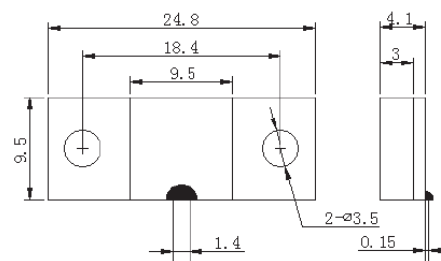


Part Number: FT50N-250-2-514B-D-M-J

Electrical Specifications

- ◇ **Resistance:** 50 Ω
- ◇ **Resistive Tolerance:** ±5%
- ◇ **Power Rating:** 250W
- ◇ **Frequency:** DC-3GHz
- ◇ **VSWR (Max.):** 1.20:1
- ◇ **Operating Temperature:** -55°C to +150°C
- ◇ **Temperature Coefficient:** <150ppm/°C
- ◇ **Substrate:** AlN or BeO
- ◇ **Lead Length:** 6mm
- ◇ **RoHS Compliant**

Outline Drawing (mm)

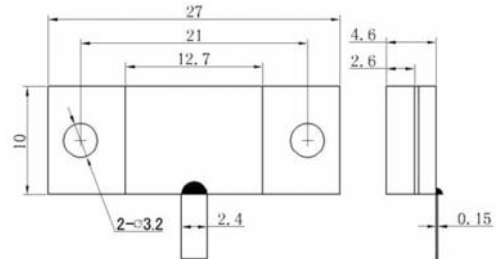


Part Number: FT50N-250-3-702B-D-M-J

Electrical Specifications

- ◇ **Resistance:** 50 Ω
- ◇ **Resistive Tolerance:** ±5%
- ◇ **Power Rating:** 250W
- ◇ **Frequency:** DC-3GHz
- ◇ **VSWR (Max.):** 1.20:1
- ◇ **Operating Temperature:** -55°C to +150°C
- ◇ **Temperature Coefficient:** <150ppm/°C
- ◇ **Substrate:** AlN or BeO
- ◇ **Lead Length:** 6mm
- ◇ **RoHS Compliant**

Outline Drawing (mm)

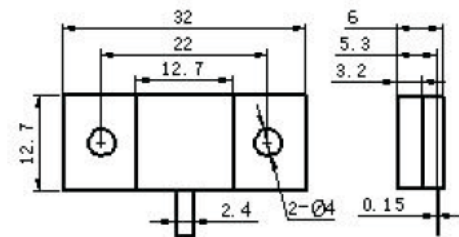


Part Number: FT50-300-3-701-D-M-J

Electrical Specifications

- ◇ **Resistance:** 50 Ω
- ◇ **Resistive Tolerance:** ±5%
- ◇ **Power Rating:** 300W
- ◇ **Frequency:** DC-3GHz
- ◇ **VSWR (Max.):** 1.20:1
- ◇ **Operating Temperature:** -55°C to +150°C
- ◇ **Temperature Coefficient:** <150ppm/°C
- ◇ **Substrate:** BeO
- ◇ **Lead Length:** 8mm
- ◇ **RoHS Compliant**

Outline Drawing (mm)

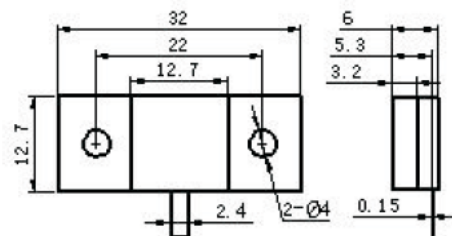


Part Number: FT50-400-2.2-702-D-M-J

Electrical Specifications

- ◇ **Resistance:** 50 Ω
- ◇ **Resistive Tolerance:** ±5%
- ◇ **Power Rating:** 400W
- ◇ **Frequency:** DC-2.2GHz
- ◇ **VSWR (Max.):** 1.30:1
- ◇ **Operating Temperature:** -55°C to +150°C
- ◇ **Temperature Coefficient:** <150ppm/°C
- ◇ **Substrate:** BeO
- ◇ **Lead Length:** 8mm
- ◇ **RoHS Compliant**

Outline Drawing (mm)

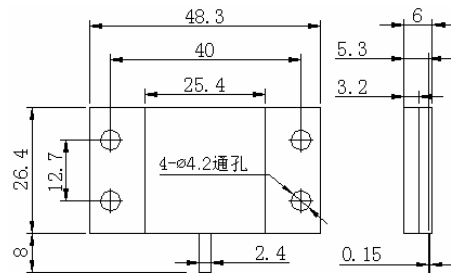


Part Number: FT50-XX-2-102-D-M-J

Electrical Specifications

- ◇ **Resistance:** 50 Ω
- ◇ **Resistive Tolerance:** ±5%
- ◇ **Power Rating:** 500W, 600W
- ◇ **Frequency:** DC-2GHz
- ◇ **VSWR (Max.):** 1.20:1
- ◇ **Operating Temperature:** -55°C to +150°C
- ◇ **Temperature Coefficient:** <150ppm/°C
- ◇ **Substrate:** BeO
- ◇ **Lead Length:** 8mm
- ◇ **RoHS Compliant**

Outline Drawing (mm)

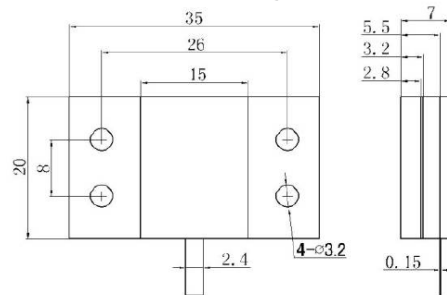


Part Number: FT50-500-6-003-D-M-J

Electrical Specifications

- ◇ **Resistance:** 50 Ω
- ◇ **Resistive Tolerance:** ±5%
- ◇ **Power Rating:** 500W
- ◇ **Frequency:** DC-6GHz
- ◇ **VSWR (Max.):** 1.30:1
- ◇ **Operating Temperature:** -55°C to +150°C
- ◇ **Temperature Coefficient:** <150ppm/°C
- ◇ **Substrate:** BeO
- ◇ **Lead Length:** 8mm
- ◇ **RoHS Compliant**

Outline Drawing (mm)

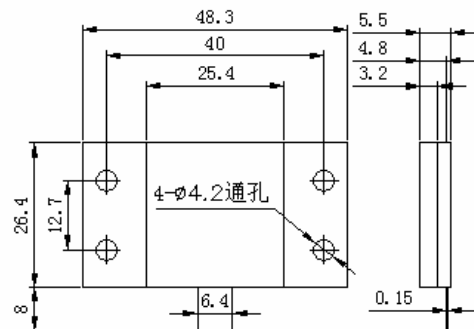


Part Number: FT50-800-0.5-101-D-M-J

Electrical Specifications

- ◇ **Resistance:** 50 Ω
- ◇ **Resistive Tolerance:** ±5%
- ◇ **Power Rating:** 800W
- ◇ **Frequency:** DC-500MHz
- ◇ **VSWR (Max.):** 1.50:1
- ◇ **Operating Temperature:** -55°C to +150°C
- ◇ **Temperature Coefficient:** <150ppm/°C
- ◇ **Substrate:** BeO
- ◇ **Lead Length:** 8mm
- ◇ **RoHS Compliant**

Outline Drawing (mm)



Part Number: FT50-800-1.1-102-D-M-J

Electrical Specifications

- ◇ **Resistance:** 50 Ω
- ◇ **Resistive Tolerance:** $\pm 5\%$
- ◇ **Power Rating:** 800W
- ◇ **Frequency:** DC-1.1GHz
- ◇ **VSWR (Max.):** 1.20:1
- ◇ **Operating Temperature:** -55°C to $+150^{\circ}\text{C}$
- ◇ **Temperature Coefficient:** $<150\text{ppm}/^{\circ}\text{C}$
- ◇ **Substrate:** BeO
- ◇ **Lead Length:** 8mm
- ◇ **RoHS Compliant**

Outline Drawing (mm)

