

## Waveguide High Power Circulators

Part Number: KTWC120-48.5B

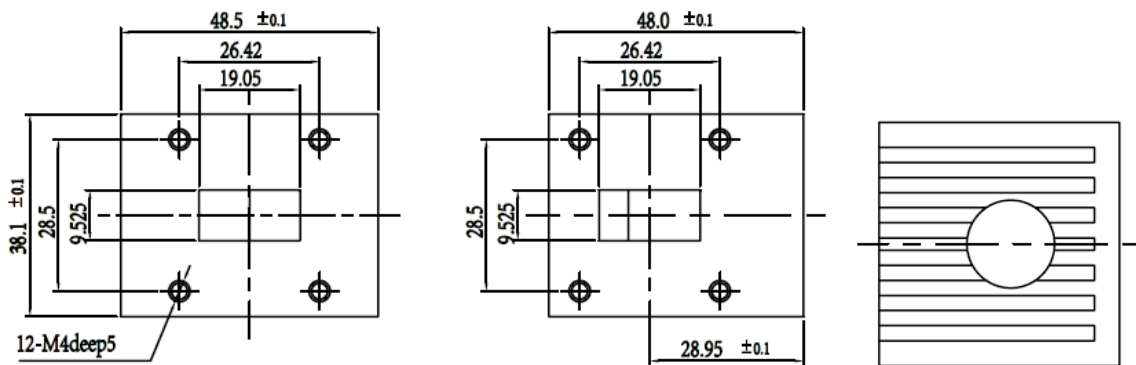
### Main Features:

- Broad Frequency Range: 9.48GHz - 15.0GHz
- High Power Handling, High Isolation, Low Insertion Loss
- Wide Temperature Range: -40°C~+85°C
- Commercial, Military and Space Applications

### Electrical Specifications at Room Temperature:

Part Number	Freq. Range (GHz)	Relative Bandwidth	Insertion Loss Max. (dB)	Isolation Min. (dB)	VSWR Max.	Peak Power (W)	Duty Ratio	Waveguide Type
KTWC120-48.5B	9.48 - 15.0	8%	0.3	20	1.20	1000	10%	WR75

### Mechanical Dimensions (mm):



### HOW TO ORDER

