

Waveguide High Power Circulators

Part Number: KTWC180-32B

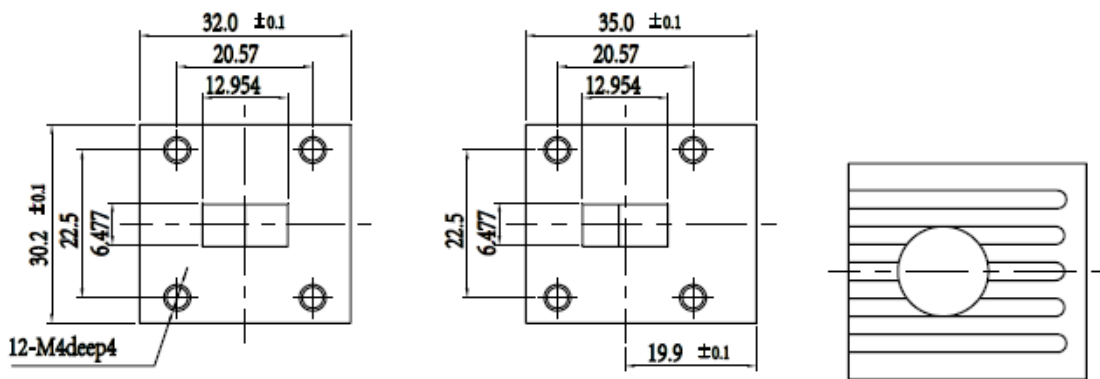
Main Features:

- Broad Frequency Range: 14.5GHz - 22.0GHz
- High Power Handling, High Isolation, Low Insertion Loss
- Wide Temperature Range: -40°C~+85°C
- Commercial, Military and Space Applications

Electrical Specifications at Room Temperature:

Part Number	Freq. Range (GHz)	Relative Bandwidth	Insertion Loss Max. (dB)	Isolation Min. (dB)	VSWR Max.	Peak Power (W)	Duty Ratio	Waveguide Type
KTWC180-32B	14.5 - 22.0	5%	0.3	20	1.20	1000	10%	WR51

Mechanical Dimensions (mm):



HOW TO ORDER

