

Waveguide High Power Circulators

Part Number: KTWC260-22.3B

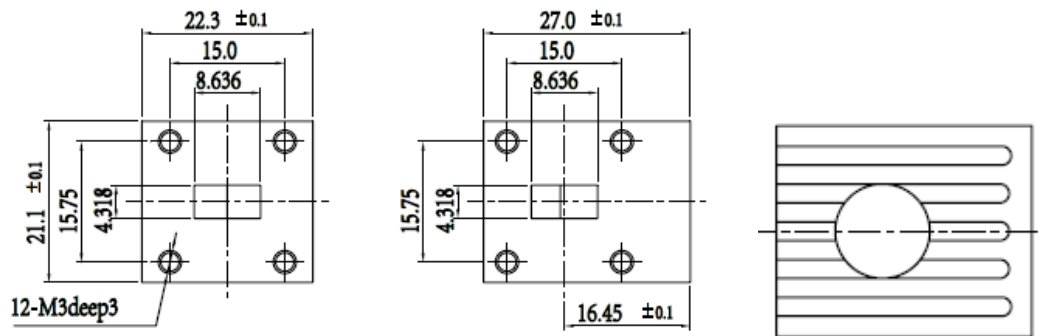
Main Features:

- Broad Frequency Range: 21.7GHz - 33.0GHz
- High Power Handling, High Isolation, Low Insertion Loss
- Wide Temperature Range: -40°C~+85°C
- Commercial, Military and Space Applications

Electrical Specifications at Room Temperature:

Part Number	Freq. Range (GHz)	Relative Bandwidth	Insertion Loss Max. (dB)	Isolation Min. (dB)	VSWR Max.	Peak Power (W)	Duty Ratio	Waveguide Type
KTWC260-22.3B	21.7 - 33.0	3%	0.3	20	1.20	500	10%	WR34

Mechanical Dimensions (mm):



HOW TO ORDER

