

Drop-in Broadband Isolators

Part Number: KTDI-1002K

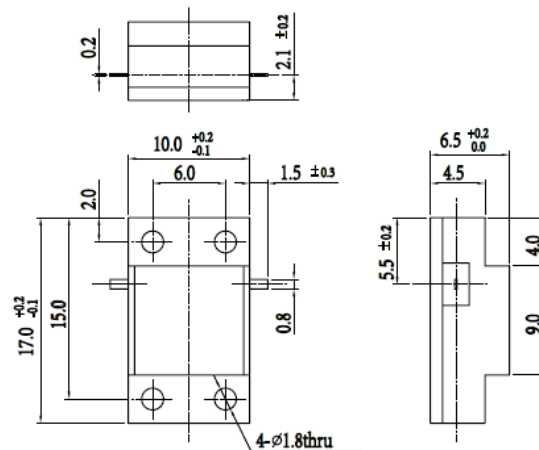
Main Features:

- Broad Frequency Range: 8 - 12GHz, 10 - 15GHz, Bandwidth up to Full
- High Isolation, Low Insertion Loss, High Power Handling
- Wide Operating Temperature: -40°C~+70°C
- Commercial, Military and Space Applications

Electrical Specifications at Room Temperature:

Part Number	Freq. Range (GHz)	Bandwidth Max. (MHz)	Insertion Loss Max. (dB)	Isolation Min. (dB)	VSWR Max.	Reverse Power (W)	Connector Type
KTDI-1002K	8 - 12	full	0.6	18	1.30	5	TAB
KTDI-1002K	10 - 15	full	0.6	18	1.30	5	TAB

Mechanical Dimensions (mm):



HOW TO ORDER

