

Waveguide High Power Circulators

Part Number: KTWC100-60B

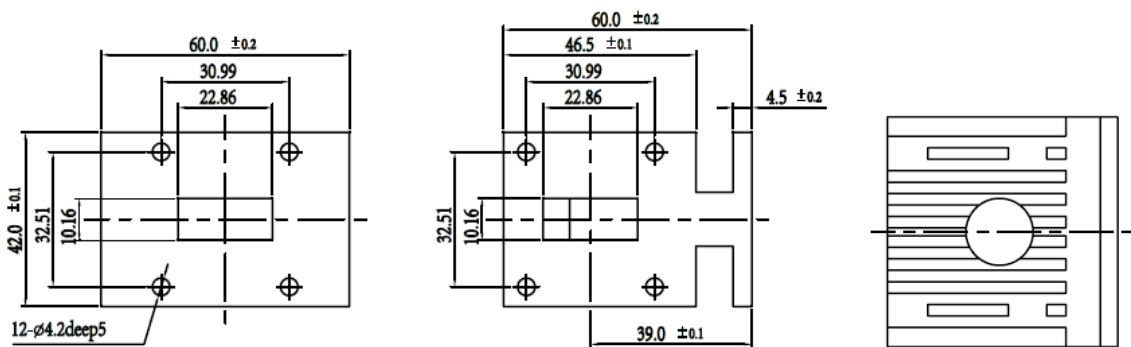
Main Features:

- Broad Frequency Range: 8.2GHz - 12.5GHz
- High Power Handling, High Isolation, Low Insertion Loss
- Wide Temperature Range: -40°C~+85°C
- Commercial, Military and Space Applications

Electrical Specifications at Room Temperature:

Part Number	Freq. Range (GHz)	Relative Bandwidth	Insertion Loss Max. (dB)	Isolation Min. (dB)	VSWR Max.	Peak Power (W)	Duty Ratio	Waveguide Type
KTWC100-60B	8.2 - 12.5	10%	0.3	20	1.20	3000	10%	WR90

Mechanical Dimensions (mm):



HOW TO ORDER

