

## Waveguide Isolators

Part Number: KTWI84-36

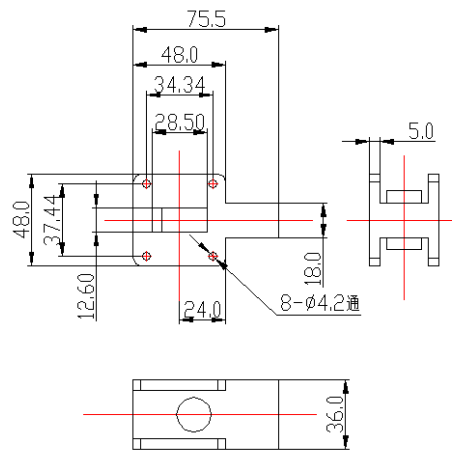
### Main Features:

- Broad Frequency Range: 6.58GHz - 10.0GHz
- High Isolation, Low Insertion Loss, Small Size
- Wide Operating Temperature Range: -40°C ~ +85°C
- Commercial, Military and Space Applications

### Electrical Specifications at Room Temperature:

Part Number	Freq. Range (GHz)	Bandwidth Max. (MHz)	Insertion Loss Max. (dB)	Isolation Min. (dB)	VSWR Max.	Waveguide Type
KTWI84-36	6.58 - 10.0	500	0.3	23	1.20	WR112
KTWI84-36	6.58 - 10.0	1000	0.4	20	1.25	WR112

### Mechanical Dimensions (mm):



### HOW TO ORDER

