

## Waveguide Isolators

Part Number: KTWI180-15A

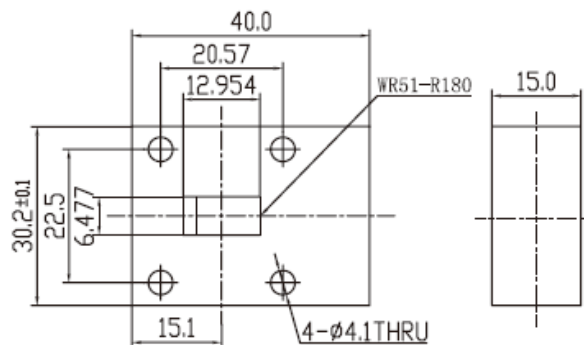
### Main Features:

- Broad Frequency Range: 14.5 GHz -22.0GHz
- High Isolation, Low Insertion Loss, Small Size
- Wide Operating Temperature: -40°C~+85°C
- Commercial, Military and Space Applications

### Electrical Specifications at Room Temperature:

Part Number	Freq. Range (GHz)	Bandwidth Max. (MHz)	Insertion Loss Max. (dB)	Isolation Min. (dB)	VSWR Max.	Waveguide Type
KTWI180-15A	14.5 - 22.0	1000	0.3	23	1.20	WR51
KTWI180-15A	14.5 - 22.0	2000	0.3	20	1.20	WR51

### Mechanical Dimensions (mm):



### HOW TO ORDER

