

Waveguide Circulators

Part Number: KTWC500-10

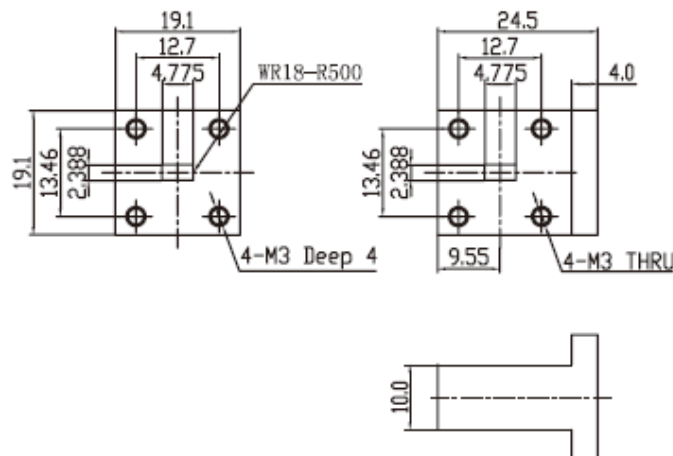
Main Features:

- Broad Frequency Range: 39.3GHz -59.7GHz
- High Isolation, Low Insertion Loss, Small Size
- Wide Operating Temperature Range: - 40°C~+85°C
- Commercial, Military and Space Applications

Electrical Specifications at Room Temperature:

Part Number	Freq. Range (GHz)	Bandwidth Max. (MHz)	Insertion Loss Max. (dB)	Isolation Min. (dB)	VSWR Max.	Waveguide Type
KTWC500-10	39.3 - 59.7	1000	0.3	23	1.20	WR19
KTWC500-10	39.3 - 59.7	2000	0.4	20	1.25	WR19

Mechanical Dimensions (mm):



HOW TO ORDER

