

Microstrip Isolators

Part Number: KTMI-902A12

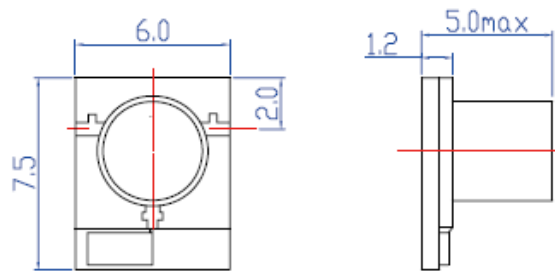
Main Features:

- Frequency Range: 8.5GHz - 10.5GHz
- Small Size, Thin Film Technology
- High Isolation, Low Insertion Loss
- Wide Operating Temperature : -55°C~+85°C
- Commercial, Military and Space Applications

Electrical Specifications at Room Temperature:

| Part Number | Freq. Range (GHz) | Bandwidth Max. (MHz) | Insertion Loss Max. (dB) | Isolation Min. (dB) | VSWR Max. | Load Power (W) | Connector Type |
|-------------|-------------------|----------------------|--------------------------|---------------------|-----------|----------------|----------------|
| KTMI-902A12 | 8.5 - 10.5 | full | 0.5 | 18 | 1.3 | 0.5 | GWB |

Mechanical Dimensions (mm):



HOW TO ORDER

