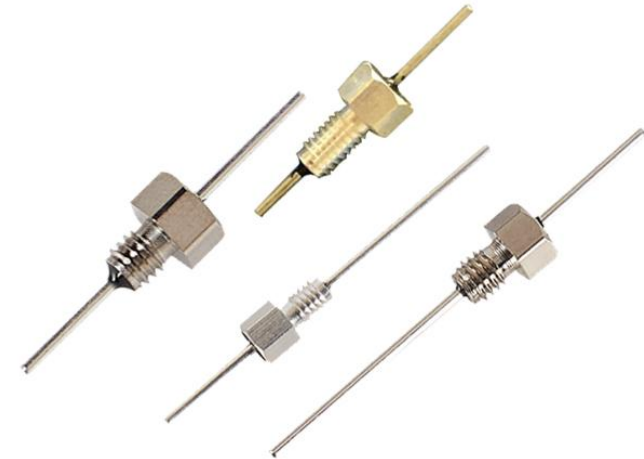
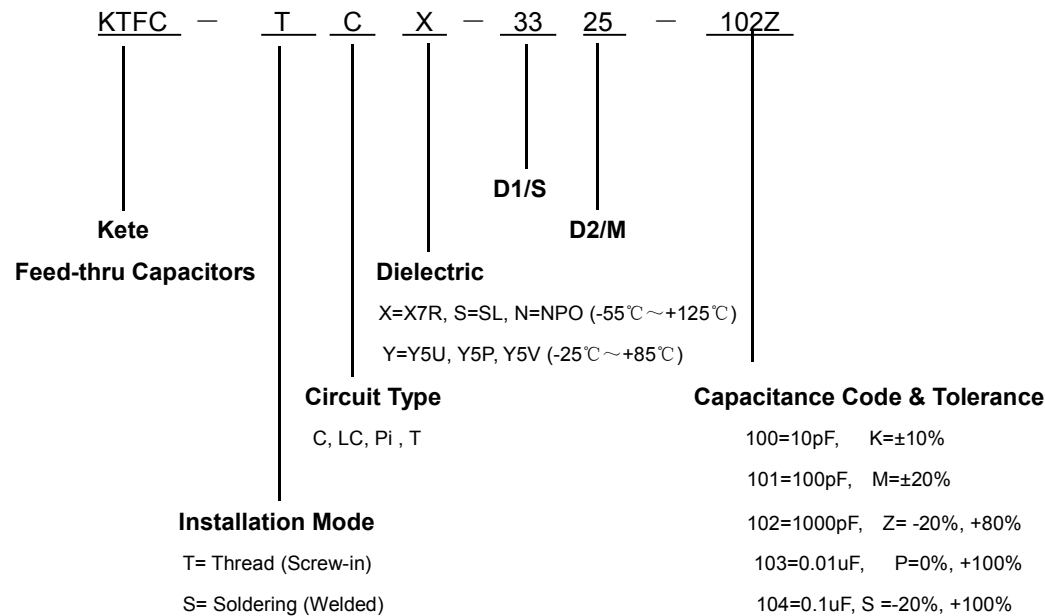


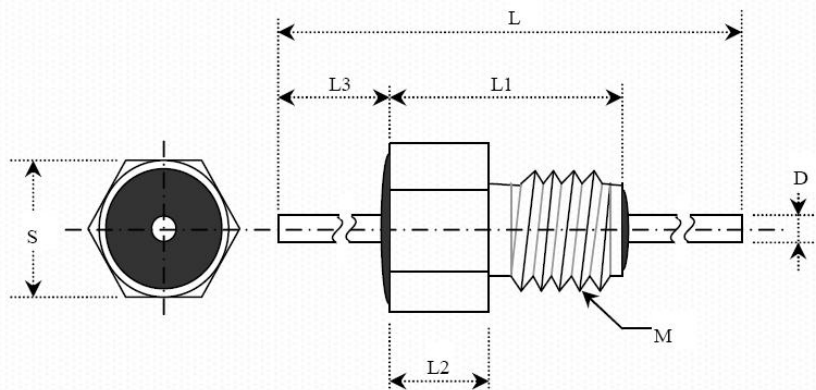
### Thread (Screw-in) Type Feed-through Capacitors (EMI Filters)

#### Key Features

- ✧ Install Expediently, Larger Capacitance, More Stable Performance
- ✧ Multiple Circuit Configurations: C, LC & Pi available
- ✧ Mainly Used on Signal, Data Line, DC Power Line Filter
- ✧ Customize Design is available
- ✧ RoHS Compliant

#### HOW TO ORDER





Here just list out part of catalogs as follows for reference. Customized products are available, please consult with Kete.

Thread Type Series Number	Outline Dimensions (mm)							Dielectric Code	Capacitance	Tolerance	Rated Voltage	Withstand Voltage	Current	Circuit
	S	M	D	L	L1	L2	L3							
KTFC-TCX3325-102Z	3.3	2.5 x 0.45	0.75	30.3	6.6	3	8.3	X7R	1000pF	Z (-20%, +80%)	50VDC	150VDC	7A	C
KTFC-TCN3325-100Z	3.3	2.5 x 0.45	0.75	30.3	6.6	3	8.3	NPO	10pF	Z (-20%, +80%)	50VDC	150VDC	5A	C
KTFC-TCX3325-102Z	3.3	2.5 x 0.45	0.75	30.3	6.6	3	7.5	X7R	1000pF	Z (-20%, +80%)	100VDC	300VDC	7A	C
KTFC-TCX3325N-102Z	3.3	2.5 x 0.45	0.75	30.3	6.6	3	7.5	X7R	1000pF	Z (-20%, +80%)	100VDC	300VDC	7A	C
KTFC-TCY3325N-222Z	3.3	2.5 x 0.45	0.75	30.3	6.6	3	8	Y5U	2200pF	Z (-20%, +80%)	100VDC	300VDC	7A	C
KTFC-TCY3325N-103Z	3.3	2.5 x 0.45	0.75	30.3	6.6	3	8	Y5V	0.01uF	Z (-20%, +80%)	100VDC	300VDC	7A	C
KTFC-TCY3325N-332Z	3.3	2.5 x 0.45	0.75	30.3	6.6	3	8	Y5V	3300pF	Z (-20%, +80%)	100VDC	300VDC	7A	C

KTFC-TCS3325G-101M	3.3	2.5 x 0.45	0.75	30.3	6.6	3	8.3	SL	100pF	M (±20%)	50VDC	150VDC	7A	C
KTFC-TCY4030N-332Z	4	3 x 0.5	0.75	30.3	6	2.5	8.8	Y5V	3300pF	Z (-20%, +80%)	100VDC	300VDC	7A	C
KTFC-TCX4030N-102Z	4	3 x 0.5	0.75	30.3	6	2.5	8.8	X7R	1000pF	Z (-20%, +80%)	100VDC	300VDC	7A	C
KTFC-TCY4030N-103Z	4	3 x 0.5	0.75	28.3	6	2.5	11.5	Y5V	0.01uF	Z (-20%, +80%)	100VDC	300VDC	7A	C
KTFC-TCX5040-332*2Z	5	4 x 0.7	0.75	35	13.5	3.5	9.5	X7R	3300 pF *2	Z (-20%, +80%)	100VDC	300VDC	7A	Pi
KTFC-TCX5040-102Z	5	4 x 0.7	0.75	22	7.5	2.5	9.5	X7R	1000pF	Z (-20%, +80%)	100VDC	300VDC	7A	C
KTFC-TCX5040-102Z	5	4 x 0.7	1	28.3	7.5	3.5	11.5	X7R	1000pF	Z (-20%, +80%)	100VDC	300VDC	10A	C
KTFC-TCX5040-102Z	5	4 x 0.5	0.75	22	7.5	2.5	9.5	X7R	1000pF	Z (-20%, +80%)	100VDC	300VDC	7A	C
KTFC-TCX6040-102Z	6	4 x 0.7	1	28.3	7.5	3.5	11.5	X7R	1000pF	Z (-20%, +80%)	100VDC	300VDC	10A	C
KTFC-TCX6040-103M	6	4 x 0.7	1	28.3	7.5	3.5	11.5	X7R	0.01uF	M (±20%)	100VDC	300VDC	10A	C
KTFC-TCX6040N-102Z	6	4 x 0.7	1	28.3	7.5	3.5	11.5	X7R	1000pF	Z (-20%, +80%)	100VDC	300VDC	10A	C
KTFC-TCX6040N-222Z	6	4 x 0.7	1	28.3	7.5	3.5	11.5	X7R	2200pF	Z (-20%, +80%)	100VDC	300VDC	10A	C
KTFC-TCX6040N-332Z	6	4 x 0.7	1	28.3	7.5	3.5	11.5	X7R	3300pF	Z (-20%, +80%)	100VDC	300VDC	10A	C
KTFC-TCY6040N-103Z	6	4 x 0.7	1	35	7.5	3.5	12	Y5V	0.01uF	Z (-20%, +80%)	100VDC	250VDC	10A	C
KTFC-TCX6050N--152Z	6	5 x 0.8	1	35	10	4	10.5	X7R	1500pF	Z (-20%, +80%)	500VDC	1250VDC	10A	C
KTFC-TCX6050N-103Z	6	5 x 0.8	1	35	10	4	10.5	X7R	0.01uF	Z (-20%, +80%)	250VDC	750VDC	10A	C

KTFC-TCX6050-152S	6	5 x 0.8	0.8	54	16	5	15	X7R	1500pF	S (-20%, +50%)	50VDC	150VDC	7A	C
KTFC-TCS7060-101M	7	6 x 1.0	2	47	16	8	15.5	SL	1500pF	M ( $\pm 20\%$ )	300VDC	2500VDC	25A	C
KTFC-TCX8050-103M	8	5 x 0.8	1	35	11	6	11.5	X7R	0.01uF	M ( $\pm 20\%$ )	1000 VDC	1500VDC	10A	C
KTFC-TCX8050-102Z	8	5 x 0.8	1	35	10	6	11.5	X7R	1000pF	Z (-20%, +80%)	500 VDC	1500VDC	10A	C
KTFC-TCX8050-562Z	8	5 x 0.8	1.5	35	10	6	11.5	X7R	5600pF	Z (-20%, +80%)	200VDC	500VDC	20A	C
KTFC-TCX8050--102Z	8	5 x 0.8	0.8	35	10	6	11.5	X7R	1000pF	Z (-20%, +80%)	50VDC	150VDC	7A	C
KTFC-TCX8060AN-472Z	8	6 x 1.0	0.8	30.3	9	4	7	X7R	4700pF	Z (-20%, +80%)	50VDC	150VDC	7A	C
KTFC-TCX8060N-105Z	8	6 x 1.0	1	28.3	9	4	10.5	X7R	1.0uF	Z (-20%, +80%)	100VDC	200VDC	10A	C
KTFC-TCY8060AN-503Z	8	6 x 1.0	1.5	35	11	6	10.5	Y5V	5000pF	Z (-20%, +80%)	250VAC	1500VAC	20A	C
KTFC-TCX8060N-102Z	8	6 x 1.0	0.8	30.3	9	4	7.0	X7R	1000pF	Z (-20%, +80%)	100VDC	630VDC	7A	C
KTFC-TCX8060N-205M	8	6 x 1.0	1	28.3	9	4	10.5	X7R	2.0uF	M ( $\pm 20\%$ )	50VDC	150VDC	10A	C
KTFC-TCX8060AN-104M	8	6 x 1.0	1	28.3	9	4	10.5	X7R	0.1uF	M ( $\pm 20\%$ )	100VDC	300VDC	10A	C
KTFC-TCS8060-101K	8	6 x 1.0	1.5	37	16	8	10.5	SL	100pF	K ( $\pm 10\%$ )	300VDC	2500VDC	20A	C
KTFC-TCS8060-251K	8	6 x 1.0	1.5	37	16	8	10.5	SL	250pF	K ( $\pm 10\%$ )	300VDC	2500VDC	20A	C
KTFC-TCX10080N-472M	10	8 x 0.75	1.5	35	15	7	10	X7R	4700pF	M ( $\pm 20\%$ )	200VDC	500VDC	20A	C
KTFC-TCX10080N-103Z	10	8 x 0.75	1.5	35	15	7	10	X7R	0.01uF	Z (-20%, +80%)	100VDC	300VDC	25A	C

KTFC-TCX10080AN-102Z	10	8 x 0.75	1.5	35	15	7	10	X7R	1000pF	Z (-20%, +80%)	200VDC	600VDC	20A	C
KTFC-TCX10080N-104Z	10	8 x 0.75	2.5	35	15	7	10	X7R	0.1uF	Z (-20%, +80%)	60VDC	200VDC	50A	C
KTFC-TCX10080N-103Z	10	8 x 0.75	2.5	35	15	7	10	X7R	0.01uF	Z (-20%, +80%)	500VDC	1000VDC	40A	C
KTFC-TCX10080N-104Z	10	8 x 0.75	1.5	35	15	7	10	X7R	0.1uF	Z (-20%, +80%)	500VDC	1000VDC	20A	C
KTFC-TCX10080N-222Z	10	8 x 0.75	2.45	35	15	7	10	X7R	2200pF	Z (-20%, +80%)	1600VDC	2500VDC	40A	C
KTFC-TCX1/4-28UNF-2A-145M	9.77	1/4-28UNF-2A	1	15.6	7.9	3.2	3.9	X7R	1.4uF	M (±20%)	50VDC	150VDC	15A	C
KTFC-TCX4-40UNC-2AN-103K	3.2	4-40UNC-2A	0.75	19	5.4	1.8	9	X7R	0.01uF	Z (-20%, +80%)	100VDC	200VDC	7A	C
KTFC-TPIX5/16-32UNEF-2A-202*2Z	9	5/16-32UNEF-2A	1.5	35	17.4	6.3	9	X7R	2200pF*2	Z (-20%, +80%)	700VDC	1050VDC	25A	Pi
KTFC-TLCX6-32UNC-2A-331Z	4	6-32UNC-2A	0.7	30.3	9.1	3.2	8.3	X7R	330pF	Z (-20%, +80%)	200VDC	500VDC	10A	LC
KTFC-TPIX8-32UNC-2A-152*2Z	5	8-32UNC-2A	0.75	28.3	5.4	1.7	12.5	X7R	1500pF*2	Z (-20%, +80%)	100VDC	300VDC	7A	Pi
KTFC-TCX8-32UNC-2A-501Z	5	8-32UNC-2A	1	28.3	5.1	1.52	12.5	X7R	500pF	Z (-20%, +80%)	200VDC	500VDC	10A	C
KTFC-TCX8-32UNC-2A-102Z	4.75	8-32UNC-2A	1	21.2	9.2	2.4	12	X7R	1000pF	Z (-20%, +80%)	200VDC	600VDC	10A	C
KTFC-TCY8-32UNC-2A-332Z	5	8-32UNC-2A	1	28.3	5.1	1.52	12.5	Y5V	3300pF	Z (-20%, +80%)	200VDC	500VDC	10A	C