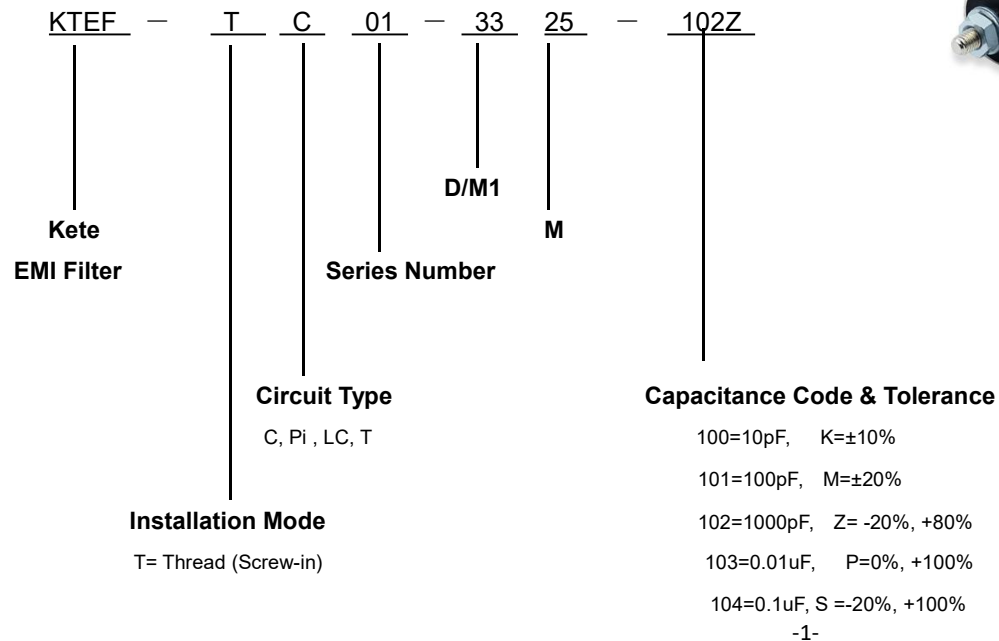


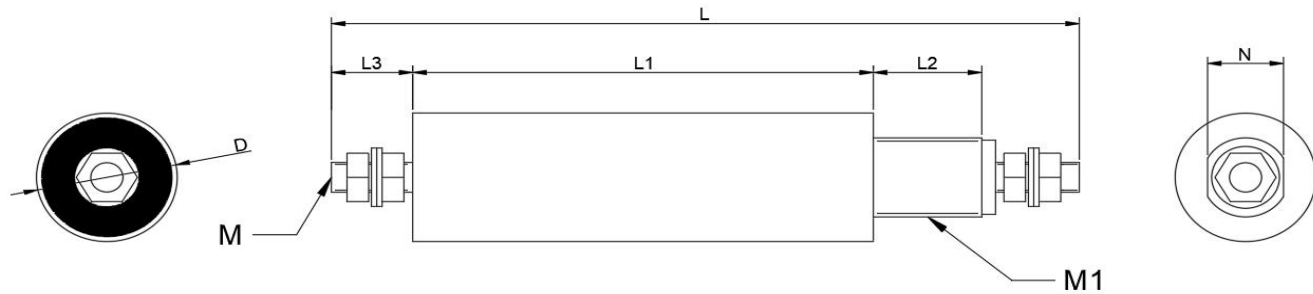
## Thread Type High Power EMI Filters

### Electrical Features

- ✧ High Capacitance, High Voltage and Current
- ✧ Low Change Rate with Temperature, Low Loss
- ✧ Multiple Circuit Configurations: C, Pi available
- ✧ Mainly Used in Large Equipment, Shielding Room etc.
- ✧ Customize Design is available
- ✧ RoHS Compliant

### HOW TO ORDER

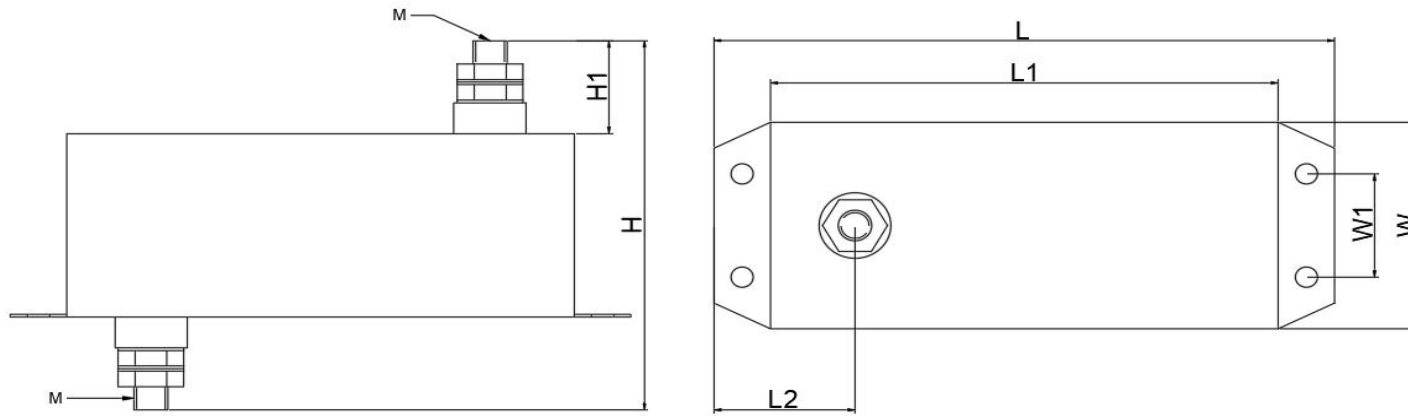




Here just list out part of catalogs as follows for reference. Customized products are available, please consult with Kete.

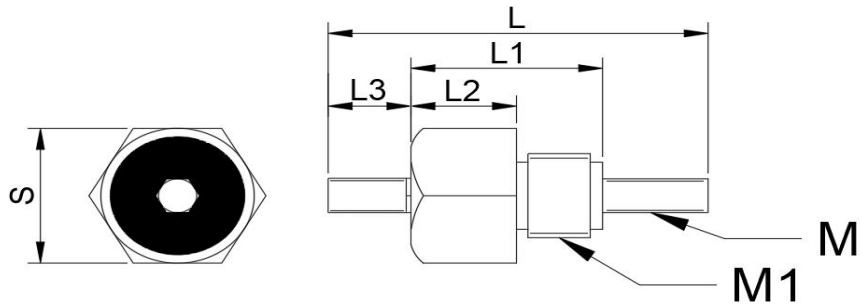
Thread Type High Power Part Number	Outline Dimensions (mm)								Capacitance	Tolerance	Rated Voltage	Withstand Voltage	Current	Circuit
	D	M	M1	N	L	L1	L2	L3						
KTEF-TPi01-2616-M4-104K	Φ26	M4	M16	14	135	85	20	15	0.1uFx2	K (±10%)	250VAC	1500VDC	≤50A	Pi
KTEF-TPi01-2626-M5-504K	Φ26	M5	M16	14	110	60	15	15	0.5uFx2	K (±10%)	250VAC	1500VAC	≤55A	Pi
KTEF-TPi01-3020-M6-205K	Φ30	M6	M20	18	154	100	13	18	2uFx2	K (±10%)	250VAC	1500VDC	≤63A	Pi
KTEF-TC04-2216-M4-472M	Φ22	M4	M16	14	63	25	10	10	4700pF	M (±20%)	250VAC	1500VAC	≤50A	C
KTEF-TC04-2216-M4-153M	Φ22	M4	M16	14	63	25	10	10	0.015uF	M (±20%)	250VAC	1500VDC	≤50A	C
KTEF-TC04-2216-M4-104K	Φ22	M4	M16	14	63	25	10	10	0.1uF	K (±10%)	250VAC	1500VDC	≤50A	C
KTEF-TC04-2216-M4-474K	Φ22	M4	M16	14	63	25	10	10	0.47uF	K (±10%)	250VAC	1500VDC	≤50A	C
KTEF-TC04-2216-M6-222K	Φ22	M6	M16	14	70	25	10	15	2200pF	K (±10%)	380VAC	2000VDC	≤63A	C

Thread Type High Power Part Number	Outline Dimensions (mm)								Capacitance	Tolerance	Rated Voltage	Withstand Voltage	Current	Circuit
	D	M	M1	N	L	L1	L2	L3						
KTEF-TC04-2216-M6-103K	Φ22	M6	M16	14	70	25	10	15	0.01uF	K (±10%)	380VAC	2000VDC	≤63A	C
KTEF-TC04-2216-M6-104M	Φ22	M6	M16	14	70	25	10	15	0.1uF	M (±20%)	250VAC	1500VDC	≤63A	C
KTEF-TC04-2216-M6-105M	Φ22	M6	M16	14	70	25	10	15	1uF	M (±20%)	250VAC	1500VDC	≤63A	C
KTEF-TC04-2216-M8-223M	Φ22	M8	M16	14	78	25	10	20	0.022uF	M (±20%)	275VAC	2500VDC	≤120A	C
KTEF-TC04-3012-M3-224K	Φ30	M3	M12	/	72	35	8	15	0.22uF	K (±10%)	300VDC/ 100VAC	2500VDC/AC	≤32A	C
KTEF-TC04-3012-M3-105K	Φ30	M3	M12	/	72	35	8	15	1uF	K (±10%)	300VDC/ 100VAC	2500VDC/AC	≤32A	C
KTEF-TC04-5032-M14-106K	Φ50	M14	M32	/	150	60	25	30	10uF	K (±10%)	250VAC	2000VDC	≤400A	C



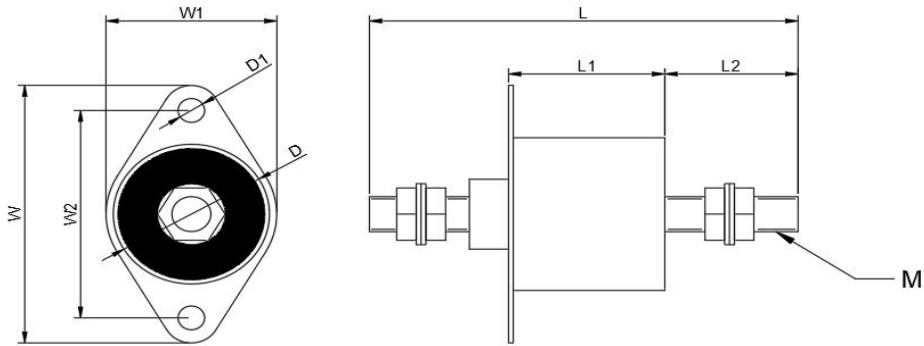
Here just list out part of catalogs as follows for reference. Customized products are available, please consult with Kete.

Thread Type High Power Part Number	Outline Dimensions (mm)								Capacitance	Tolerance	Rated Voltage	Withstand Voltage	Current	Circuit
	M	L	L1	L2	W	W1	H	H1						
<b>KTEF-TPi03-18080-M12-104K</b>	M12	220	180	45	80	40	115	35	0.1uFx2	K (±10%)	800VDC	2400VDC	≤300A	Pi



Here just list out part of catalogs as follows for reference. Customized products are available, please consult with Kete.

Thread Type High Power Part Number	Outline Dimensions (mm)							Capacitance	Tolerance	Rated Voltage	Withstand Voltage	Current	Circuit
	S	M	L	L1	L2	L3	M1						
KTEF-TC07-1610-M4-332K	16	M4	45	19	11	12	M10	3300pF	K (±10%)	250VAC/ 500VDC	1500VDC	≤50A	C
KTEF-TC07-1610-M4-104K	16	M4	45	19	11	12	M10	0.1uF	K (±10%)	500VDC	1000VDC	≤50A	C
KTEF-TC07-1610-M4-224K	16	M4	45	19	11	12	M10	0.22uF	K (±10%)	200VDC	500VDC	≤50A	C
KTEF-TC07-1610-M4-474K	16	M4	45	19	11	12	M10	0.47uF	K (±10%)	1000VDC	300VDC	≤50A	C
KTEF-TC07-1610-M4-105K	16	M4	45	19	11	12	M10	1uF	K (±10%)	100VDC	300VDC	≤50A	C
KTEF-TC07-1612-M6-224M	16	M6	53	21	13	14	M12	0.22uF	M (±20%)	100VDC	300VDC	≤63A	C



Here just list out part of catalogs as follows for reference. Customized products are available, please consult with Kete.

Thread Type High Power Part Number	Outline Dimensions (mm)									Capacitance	Tolerance	Rated Voltage	Withstand Voltage	Current	Circuit
	D	D1	M	L	L1	L2	W	W1	W2						
<b>KTEF-TC13-3532-M8-104M</b>	Φ35	Φ5.5	M8	110	32	44	59.5	41	47.5	0.1uF	M (±20%)	380VAC	2500VDC	≤100A	C
<b>KTEF-TC13-3532-M8-105M</b>	Φ35	Φ5.5	M8	110	32	44	59.5	41	47.5	1uF	M (±20%)	250VAC	1500VDC	≤100A	C
<b>KTEF-TC13-3532-M10-105M</b>	Φ35	Φ5.5	M10	90	32	44	59.5	41	47.5	1uF	M (±20%)	250VAC	1500VDC	≤200A	C
<b>KTEF-TC13-3532-M10-475M</b>	Φ35	Φ5.5	M10	90	32	44	59.5	41	47.5	4.7uF	M (±20%)	200VDC	500VDC	≤200A	C
<b>KTEF-TC13-3532-M12-105M</b>	Φ35	Φ5.5	M12	90	32	44	59.5	41	47.5	1uF	M (±20%)	250VAC	1500VDC	≤300A	C